

Circuits	Dimensions (mm)		
	A	B	C
2	1.20	4.20	2.64
3	2.40	5.40	3.84
4	3.60	6.60	5.04
5	4.80	7.80	6.24
6	6.00	9.00	7.44
7	7.20	10.20	8.64

**Specifications:**

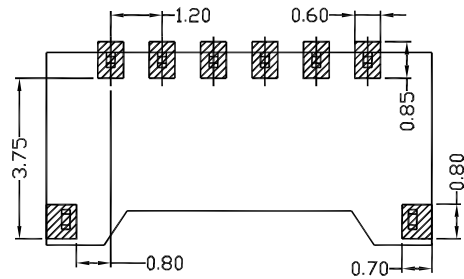
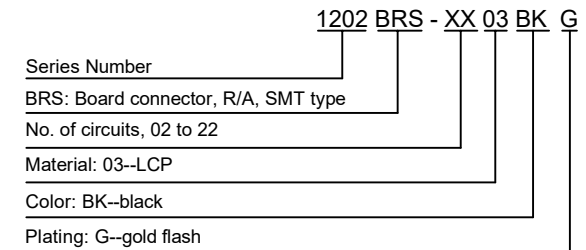
Current Rating: 1.5A AC/DC  
Voltage rating: 50V AC/DC  
Temperature range: -25°C to +85°C  
Contact resistance: 20mΩ max.  
Insulation resistance: 100M min.  
Withstand voltage: 500V AC/minute  
Package: 4000pcs / reel

**Material:**

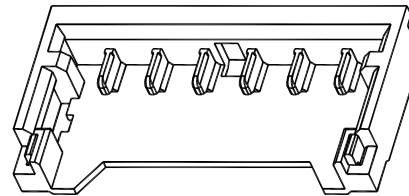
Housing: LCP, UL94V-0, black  
PIN: Brass  
Solder Tab: Brass

**Mates with:** 1202W (Single Row Wire Connector)

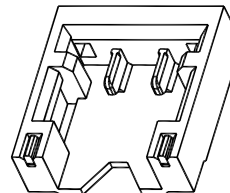
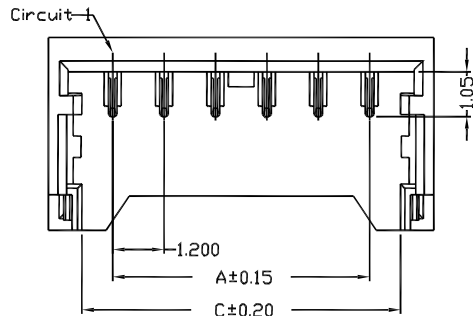
**Part Number Information:**



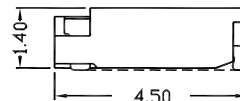
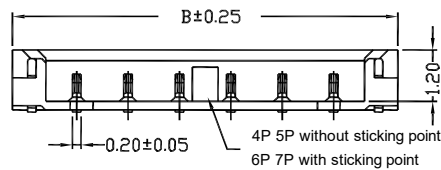
Recommended PCB Layout



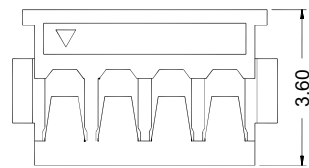
4 - 22 PIN



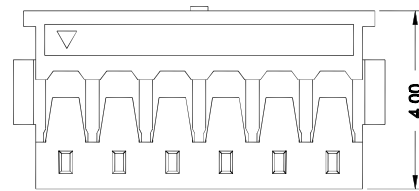
2 - 3 PIN



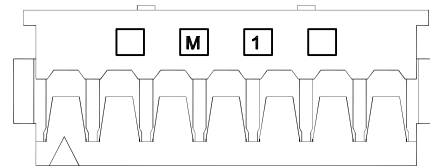
							General Tolerance	Zeakka Electronics				Document No.: ZK-1202BRS		
							.X ±0.3					Title: HEADER, SMT TYPE, SINGLE ROW, 1.20MM PITCH		
							.XX ±0.2	APPR	CH'K	DRWN	Date	Dimensions	Scale	Version
Date	Version	EC No.	Description	DRWN	CH'K	APPR	.XXX ±0.1	Kai Lee	Cris Wang	Jun Wei	2020.8.7	mm	1:1	A
							THIRD ANGLE PROJECTION							



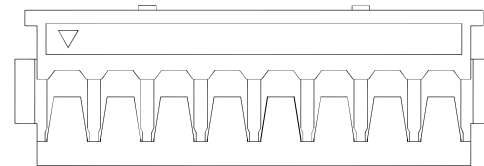
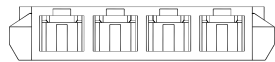
2 - 5 PIN



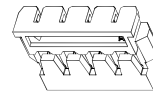
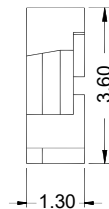
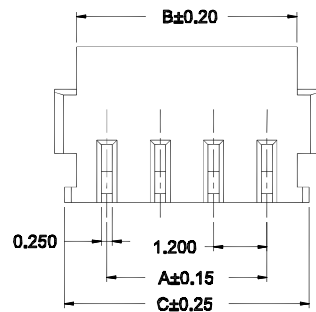
6 PIN



7 PIN



8 - 10 PIN



3D View

**Specifications:**

Current Rating: 1.5A AC/DC  
 Voltage rating: 50V AC/DC  
 Temperature range: -25°C to +85°C  
 Contact resistance: 20mΩ max.  
 Insulation resistance: 100M min.  
 Withstand voltage: 500V AC/minute  
 Package: 1000pcs / bag

Circuits	Dimensions (mm)		
	A	B	C
2	1.20	2.60	3.10
3	2.40	3.80	4.30
4	3.60	5.00	5.50
5	4.80	6.20	6.70
6	6.00	7.40	7.90
7	7.20	8.60	9.10

**Material:**

Housing: LCP, UL94V-0, black

**Mates with:** 1202BRS (single row header)

**Used with:** 1202TF-PT (female terminal)

**Part Number Information:**

1202 W - XX 03 BK

Series Number

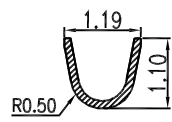
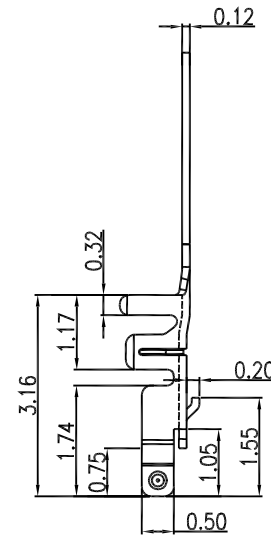
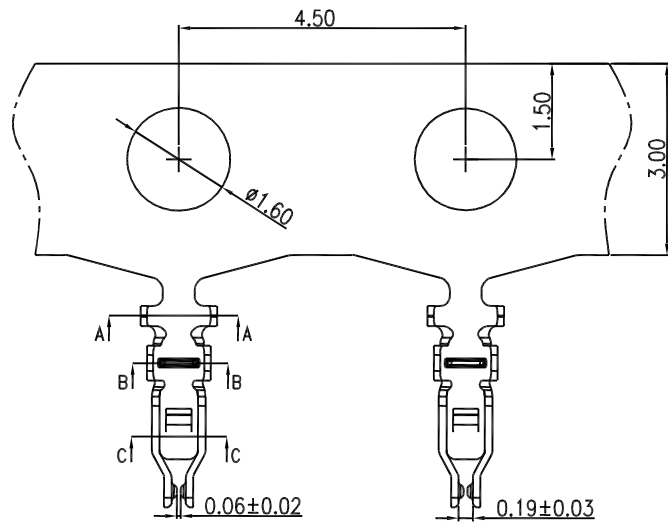
W: Wire Connector

No. of circuits, 02 to 22

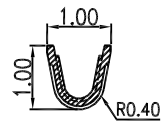
Material: 03--LCP

Color: BK--black

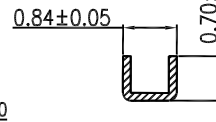
							General Tolerance	Zeakka Electronics				Document No.: ZK-1202W			
							.X ±0.3					Title: HOUSING, CRIMP TYPE, SINGLE ROW, 1.20MM PITCH			
							.XX ±0.2	APPR	CH'K	DRWN	Date	Dimensions	Scale	Version	
Date	Version	EC No.	Description	DRWN	CH'K	APPR	.XXX ±0.1	Kai Lee	Cris Wang	Jun Wei	2020.8.7	mm	1:1	A	
							THIRD ANGLE PROJECTION								



SECTION A-A



SECTION B-B



SECTION C-C

### Specifications:

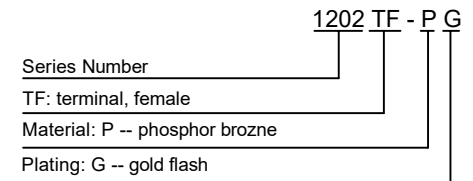
Current Rating: 1.5A AC/DC  
 Voltage rating: 50V AC/DC  
 Temperature range: -25°C to +85°C  
 Contact resistance: 20mΩ max.  
 Insulation resistance: 100M min.  
 Withstand voltage: 500V AC/minute  
 Applicable wire: AWG36 - AWG30  
 Insulation OD: max 0.75mm  
 Package: 15000pcs / reel

### Material:

Phosphor bronze

Used with: 1202W (female housing)

### Part Number Information:



							General Tolerance	Zeakka Electronics				Document No.: ZK-1202TF		
							.X ±0.3					Title: TERMINAL, CRIMP TYPE, PHOSPHOR BRONZE, GOLD FLASH, REEL		
							.XX ±0.2					APPR	CH'K	DRWN
Date	Version	EC No.	Description	DRWN	CH'K	APPR	.XXX ±0.1	Kai Lee	Cris Wang	Jun Wei	2020.8.7	mm	1:1	A

THIRD ANGLE PROJECTION