

Specifications:

Current Rating: 2.0A AC/DC
Voltage rating: 100V AC/DC
Temperature range: -25°C to +85°C
Contact resistance: 20mΩ max.
Insulation resistance: 500M min.
Withstand voltage: 500V AC/minute
Package: 1000pcs / reel

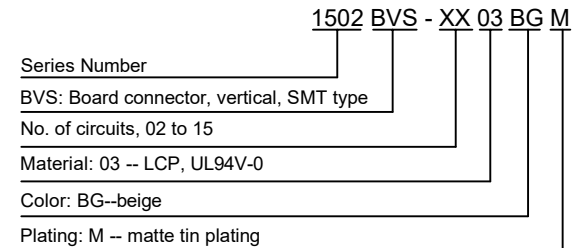
Material:

Housing: LCP, UL94V-0, beige
PIN: phosphor bronze
Solder tab: brass

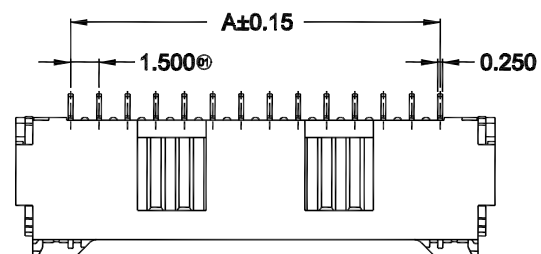
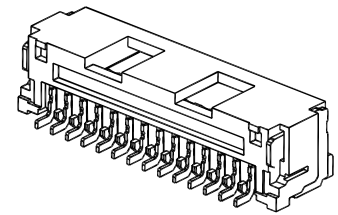
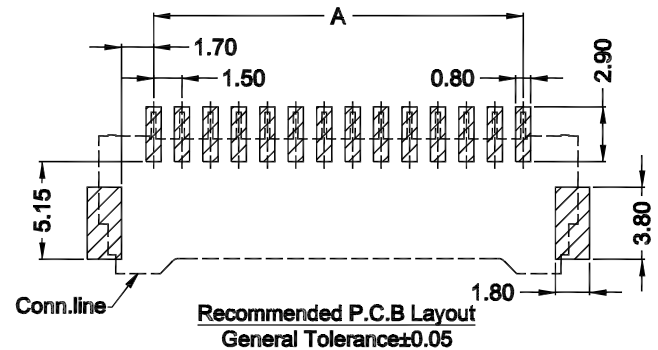
Circuits	Dimensions (mm)		
	A	B	C
2	1.50	7.30	4.45
3	3.00	8.80	5.95
4	4.50	10.30	7.45
5	6.00	11.80	8.95
6	7.50	13.30	10.45
7	9.00	14.80	11.95
8	10.50	16.30	13.45
9	12.00	17.80	14.95
10	13.50	19.30	16.45
11	15.00	20.80	17.95
12	16.50	22.30	19.45
13	18.00	23.80	20.95
14	19.50	25.30	22.45
15	21.00	26.80	23.95

Mates with: 1502W (wire connector, female, single row)

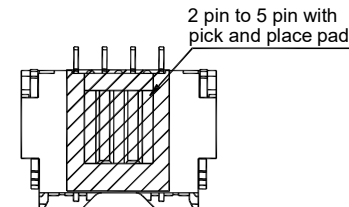
Part Number Information:



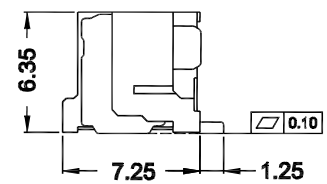
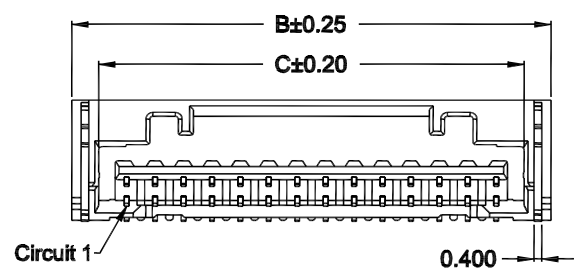
							General Tolerance	Zeakka Electronics				Document No.:	ZK-1502BVS		
							.X ± 0.3								
							.XX ± 0.2	APPR	CH'K	DRWN	Date	Dimensions	Scale	Version	
Date	Version	EC No.	Description	DRWN	CH'K	APPR	THIRD ANGLE PROJECTION	Kai Lee	Cris Wang	Jun Wei	2020.8.7	mm	1:1	A	



06P-15P Double Hole
Scale 1:1



02P-05P Single Hole
Scale 1:1



Specifications:

Current Rating: 2.0A AC/DC
 Voltage rating: 100V AC/DC
 Temperature range: -25°C to +85°C
 Contact resistance: 20mΩ max.
 Insulation resistance: 500M min.
 Withstand voltage: 500V AC/minute
 Package: 1000pcs / reel

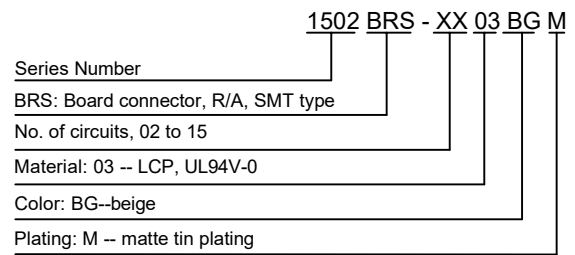
Material:

Housing: LCP, UL94V-0, beige
 PIN: phosphor bronze
 Solder tab: brass

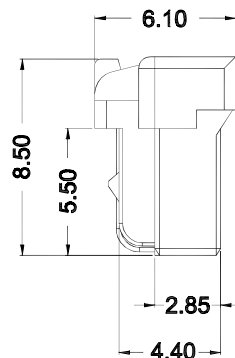
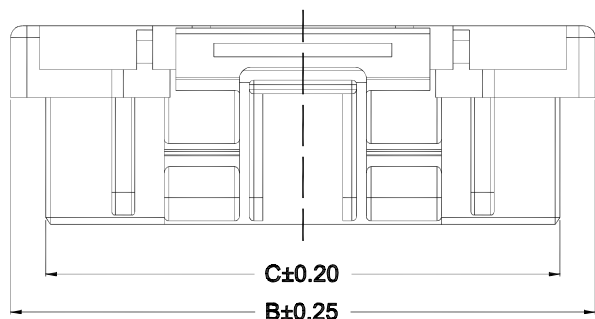
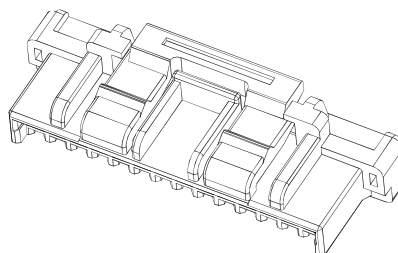
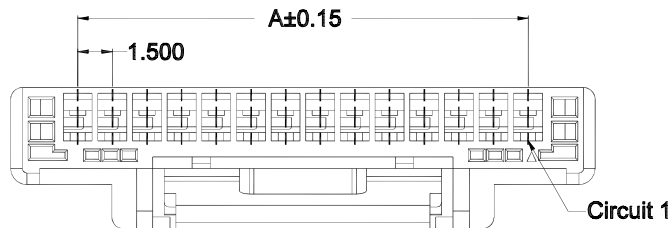
Circuits	Dimensions (mm)		
	A	B	C
2	1.50	7.30	4.45
3	3.00	8.80	5.95
4	4.50	10.30	7.45
5	6.00	11.80	8.95
6	7.50	13.30	10.45
7	9.00	14.80	11.95
8	10.50	16.30	13.45
9	12.00	17.80	14.95
10	13.50	19.30	16.45
11	15.00	20.80	17.95
12	16.50	22.30	19.45
13	18.00	23.80	20.95
14	19.50	25.30	22.45
15	21.00	26.80	23.95

Mates with: 1502W (wire connector, female, single row)

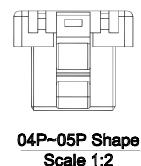
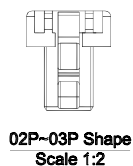
Part Number Information:



							General Tolerance	Zeakka Electronics				Document No.:	ZK-1502BRS		
							.X ±0.3					Title:	HEADER, R/A, SMT TYPE, SINGLE ROW, 1.50MM PITCH, MATTE TIN		
							.XX ±0.2	APPR	CH'K	DRWN	Date	Dimensions	Scale	Version	
Date	Version	EC No.	Description	DRWN	CH'K	APPR	.XXX ±0.1	Kai Lee	Cris Wang	Jun Wei	2020.8.7	mm	1:1	A	
							THIRD ANGLE PROJECTION								



02P~03P Shape Scale 1:1



Specifications:

Current Rating: 2.0A AC/DC
 Voltage rating: 100V AC/DC
 Temperature range: -25°C to +85°C
 Contact resistance: 20mΩ max.
 Insulation resistance: 500M min.
 Withstand voltage: 500V AC/minute
 Package: 1000pcs / bag

Material:

Housing: nylon 66, UL94V-0, white

Mates with: 1502BVS (header, vertical, SMT type)
 1502BRS (header, R/A, SMT type)

Used with: 1502TF-PT (female terminal)

Part Number Information:

Series Number: 1502
 W: wire connector
 No. of circuits, 02 to 15: XX
 Material: 00-- nylon 66, UL94V-0
 Color: WH -- white

Circuits	A	B	D
2	1.50	7.30	4.25
3	3.00	8.80	5.75
4	4.50	10.30	7.25
5	6.00	11.80	8.75
6	7.50	13.30	10.25
7	9.00	14.80	11.75
8	10.50	16.30	13.25
9	12.00	17.80	14.75
10	13.50	19.30	16.25
11	15.00	20.80	17.75
12	16.50	22.30	19.25
13	18.00	23.80	20.75
14	19.50	25.30	22.25
15	21.00	26.80	23.75

							General Tolerance	Zeakka Electronics				Document No.: ZK-1502W		
							.X ±0.3					Title: HOUSING, FEMALE, CRIMP TYPE, SINGLE ROW, 1.50MM PITCH		
							.XX ±0.2					APPR	CH'K	DRWN
Date	Version	EC No.	Description	DRWN	CH'K	APPR	THIRD ANGLE PROJECTION	Kai Lee	Cris Wang	Jun Wei	2020.8.7	mm	1:1	A

Specifications:

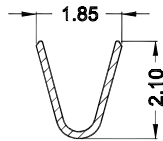
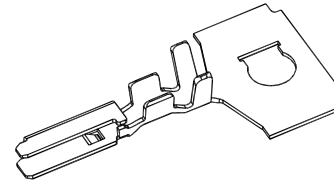
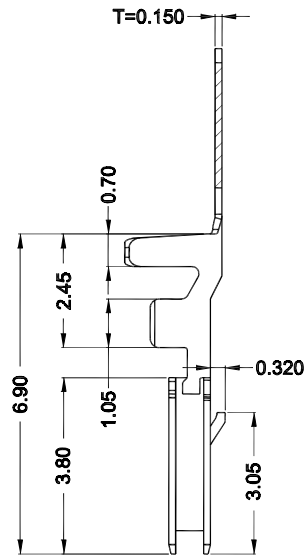
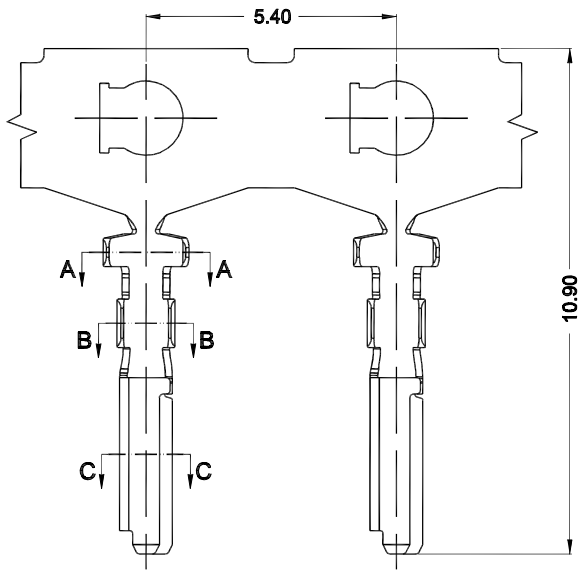
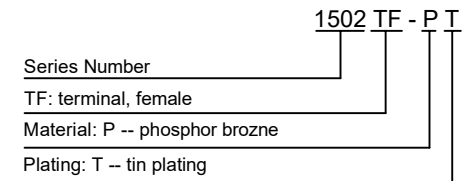
Current Rating: 2.0A AC/DC
 Voltage rating: 100V AC/DC
 Temperature range: -25°C to +85°C
 Contact resistance: 20mΩ max.
 Insulation resistance: 100M min.
 Withstand voltage: 500V AC/minute
 Applicable wire: AWG28 - AWG24
 Package: 10000pcs / reel

Material:

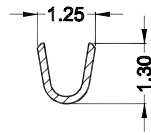
Phosphor bronze

Used with: 1502W (female housing)

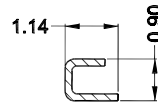
Part Number Information:



SECTION: A-A
SCALE: 1:1



SECTION: B-B
SCALE: 1:1



SECTION: C-C
SCALE: 1:1

							General Tolerance	<h1>Zeakka Electronics</h1>				Document No.: ZK-1502TF						
							.X ±0.3					Title: TERMINAL, FEMALE, CRIMP TYPE, PHOSPHOR BRONZE, TIN, REEL						
							.XX ±0.2					APPR	CH'K	DRWN	Date	Dimensions	Scale	Version
							.XXX ±0.1					Kai Lee	Cris Wang	Jun Wei	2020.8.7	mm	1:1	A
Date	Version	EC No.	Description	DRWN	CH'K	APPR	THIRD ANGLE PROJECTION											