

**Specifications:**

Current Rating: 1.0A AC/DC  
 Voltage rating: 50V AC/DC  
 Temperature range: -25°C to +85°C  
 Contact resistance: 20mΩ max.  
 Insulation resistance: 500MΩ min.  
 Withstand voltage: 500V AC/minute

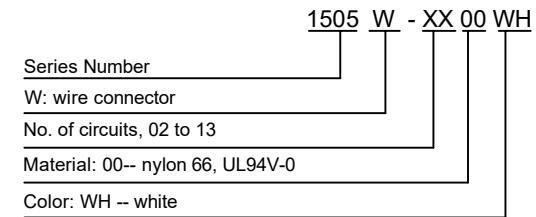
Circuits	Dimensions (mm)	
	A	B
2	1.50	3.60
3	3.00	5.10
4	4.50	6.60
5	6.00	8.10
6	7.50	9.60
7	9.00	11.10
8	10.50	12.60
9	12.00	14.10
10	13.50	15.60
11	15.00	17.10
12	16.50	18.60
13	18.00	20.10

**Material:**

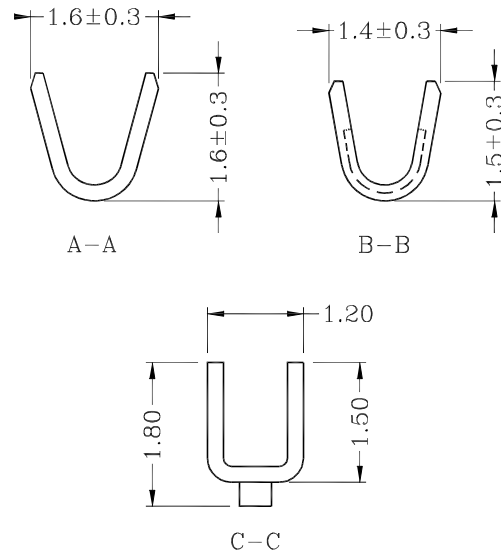
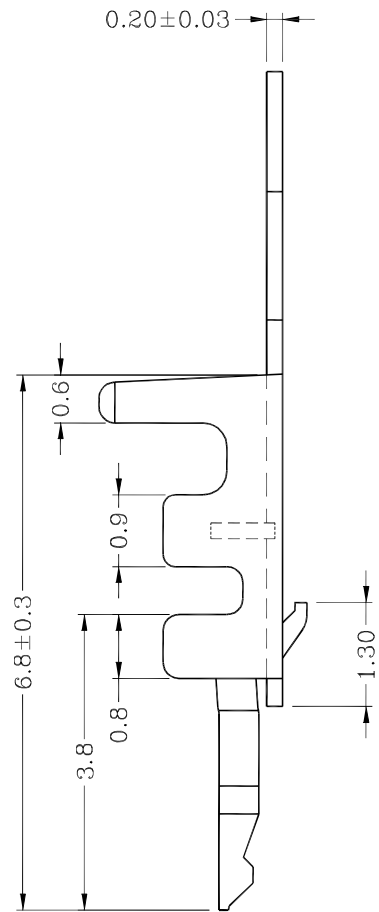
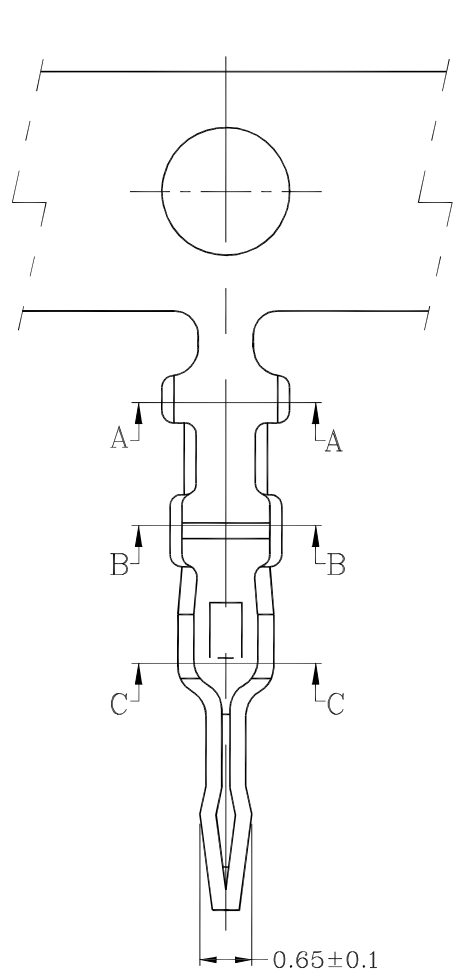
Housing: nylon 66, UL94V-0, white

Used with: 1505T-PT (female terminal)

**Part Number Information:**



							General Tolerance	Zeakka Electronics				Document No.: ZK-1505W		
							.X ±0.3					Title: HOUSING, BOARD-IN, CRIMP TYPE, SINGLE ROW, 1.50MM PITCH		
							.XX ±0.2	APPR	CH'K	DRWN	Date	Dimensions	Scale	Version
Date	Version	EC No.	Description	DRWN	CH'K	APPR	.XXX ±0.1	Kai Lee	Cris Wang	Jun Wei	2020.8.7	mm	1:1	A
							THIRD ANGLE PROJECTION							



**Specifications:**

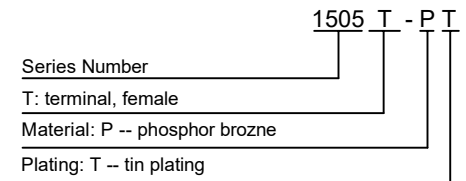
Current Rating: 1.0A AC/DC  
 Voltage rating: 50V AC/DC  
 Temperature range: -25°C to +85°C  
 Contact resistance: 20mΩ max.  
 Insulation resistance: 500MΩ min.  
 Withstand voltage: 500V AC/minute  
 Applicable wire: AWG30 - AWG26

**Material:**

Phosphor bronze

**Used with:** 1505W (Board-in housing)

**Part Number Information:**



							General Tolerance	<b>Zeakka Electronics</b>				Document No.: ZK-1505T						
							.X ±0.3					Title: TERMINAL, FEMALE, CRIMP TYPE, PHOSPHOR BRONZE, TIN, REEL						
							.XX ±0.2					APPR	CH'K	DRWN	Date	Dimensions	Scale	Version
							.XXX ±0.1					Kai Lee	Cris Wang	Jun Wei	2020.8.7	mm	1:1	A
Date	Version	EC No.	Description	DRWN	CH'K	APPR	THIRD ANGLE PROJECTION											