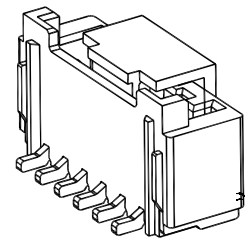
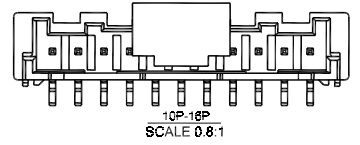
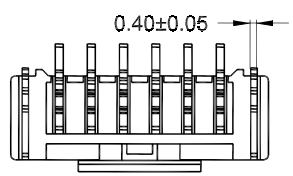
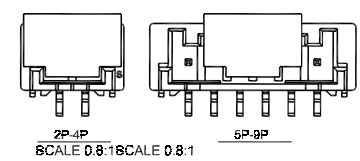


Recommended P.C.B Layout
General Tolerance±0.05



Specifications:

Current Rating: 3.0A AC/DC
Voltage rating: 250V AC/DC
Temperature range: -40°C to +105°C
Contact resistance: 10mΩ max.
Insulation resistance: 1000MΩ min.
Withstand voltage: 800V AC/minute
Package: tape & reel

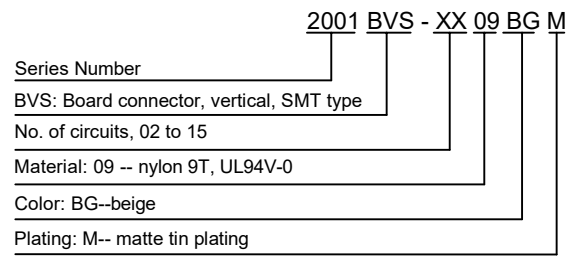
Material:

Housing: nylon 9T, UL94V-0, beige
PIN: brass
Solder tab: brass

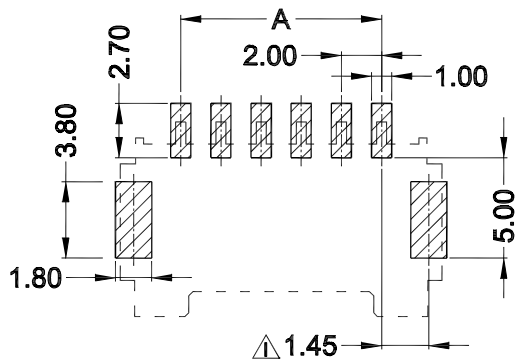
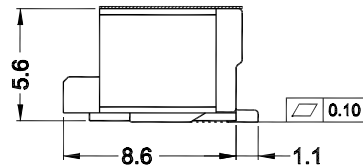
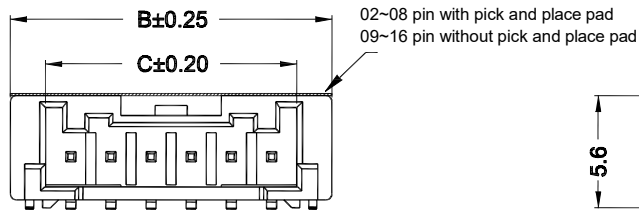
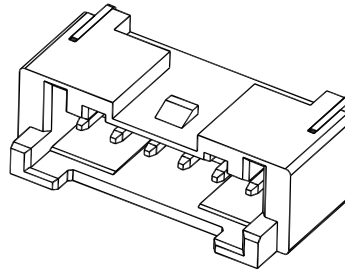
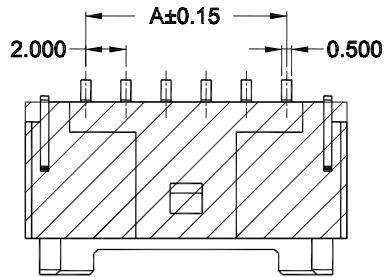
Circuits	Dimensions (mm)		
	A	B	C
2	2.00	8.00	4.50
3	4.00	10.00	6.50
4	6.00	12.00	8.50
5	8.00	14.00	10.50
6	10.00	16.00	12.50
7	12.00	18.00	14.50
8	14.00	20.00	16.50
9	16.00	22.00	18.50
10	18.00	24.00	20.50
11	20.00	26.00	22.50
12	22.00	28.00	24.50
13	24.00	30.00	26.50
14	26.00	32.00	28.50
15	28.00	34.00	30.50
16	30.00	36.00	32.50

Mates with: 2001W (wire connector, female, single row)

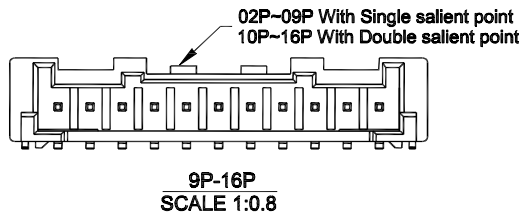
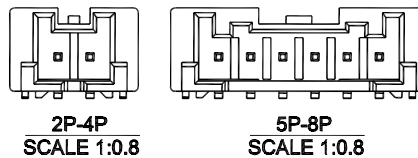
Part Number Information:



							General Tolerance	Zeakka Electronics				Document No.: ZK-2001BVS		
							.X ±0.3					Title: HEADER, VERTICAL, SMT TYPE, SINGLE ROW, 2.0MM PITCH, MATTE TIN		
							.XX ±0.2	APPR	CH'K	DRWN	Date	Dimensions	Scale	Version
Date	Version	EC No.	Description	DRWN	CH'K	APPR	.XXX ±0.1	Kai Lee	Cris Wang	Jun Wei	2020.8.8	mm	1:1	A
							THIRD ANGLE PROJECTION							



Recommended P.C.B Layout
General Tolerance±0.05



Specifications:

Current Rating: 3.0A AC/DC
Voltage rating: 250V AC/DC
Temperature range: -40°C to +105°C
Contact resistance: 10mΩ max.
Insulation resistance: 1000MΩ min.
Withstand voltage: 800V AC/minute
Package: tape & reel

Material:

Housing: nylon 9T, UL94V-0, beige
PIN: brass
Solder tab: brass

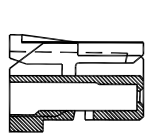
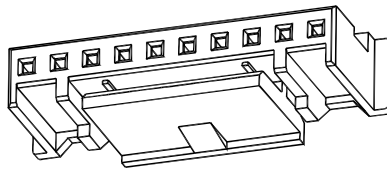
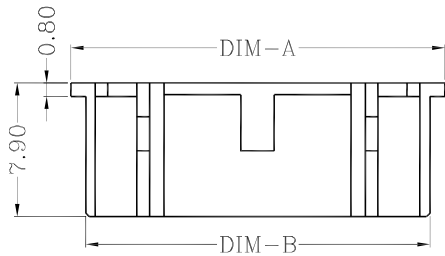
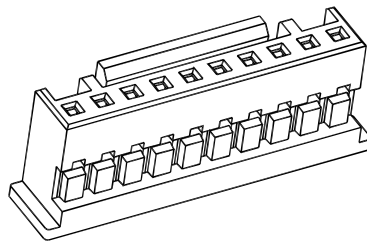
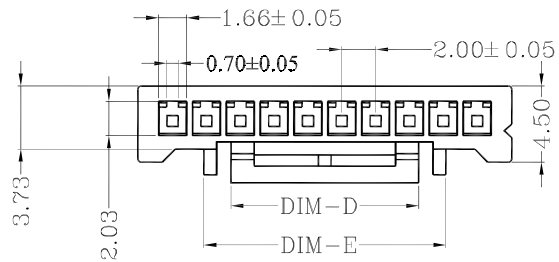
Circuits	Dimensions (mm)		
	A	B	C
2	2.00	8.00	4.50
3	4.00	10.00	6.50
4	6.00	12.00	8.50
5	8.00	14.00	10.50
6	10.00	16.00	12.50
7	12.00	18.00	14.50
8	14.00	20.00	16.50
9	16.00	22.00	18.50
10	18.00	24.00	20.50
11	20.00	26.00	22.50
12	22.00	28.00	24.50
13	24.00	30.00	26.50
14	26.00	32.00	28.50
15	28.00	34.00	30.50
16	30.00	36.00	32.50

Mates with: 2001W (wire connector, female, single row)

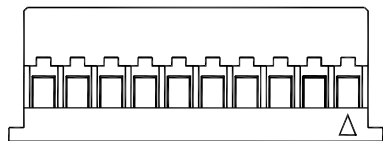
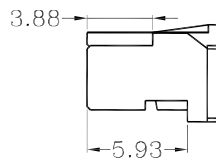
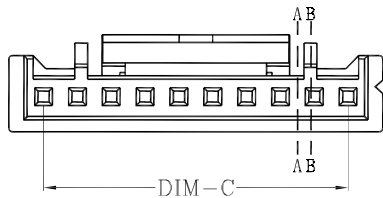
Part Number Information:

Series Number: 2001 BRS - XX 09 BG M
 BRS: Board connector, R/A, SMT type
 No. of circuits, 02 to 15
 Material: 09 -- nylon 9T, UL94V-0
 Color: BG--beige
 Plating: M -- matte tin plating

							General Tolerance	Zeakka Electronics				Document No.: ZK-2001BRS		
							.X ±0.3					Title: HEADER, R/A, SMT TYPE, SINGLE ROW, 2.0MM PITCH, MATTE TIN		
							.XX ±0.2	APPR	CH'K	DRWN	Date	Dimensions	Scale	Version
Date	Version	EC No.	Description	DRWN	CH'K	APPR	.XXX ±0.1	Kai Lee	Cris Wang	Jun Wei	2020.8.8	mm	1:1	A
							THIRD ANGLE PROJECTION							



B-B



Circuits	Dimensions (mm)				
	A	B	C	D	E
2	6.10	4.34	2.00	2.60	
3	8.10	6.34	4.00	3.45	6.35
4	10.10	8.34	6.00	4.50	8.35
5	12.10	10.34	8.00	4.50	7.70
6	14.10	12.34	10.00	4.50	7.70
7	16.10	14.34	12.00	4.50	7.70
8	18.10	16.34	14.00	4.50	7.70
9	20.10	18.34	16.00	4.50	7.70
10	22.10	20.34	18.00	11.10	14.30
11	24.10	22.34	20.00	11.10	14.30
12	26.10	24.34	22.00	11.10	14.30
13	28.10	26.34	24.00	11.10	14.30
14	30.10	28.34	26.00	11.10	14.30
15	32.10	30.34	28.00	11.10	14.30
16	34.10	32.34	30.00	11.10	14.30

Specifications:

Current Rating: 3.0A AC/DC
 Voltage rating: 250V AC/DC
 Temperature range: -25°C to +85°C
 Contact resistance: 20mΩ max.
 Insulation resistance: 1000MΩ min.
 Withstand voltage: 800V AC/minute

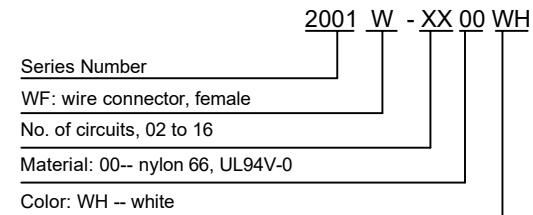
Material:

Housing: nylon 66, UL94V-0, white

Mates with: 2001BVS (header, vertical, SMT type)
 2001BRS (header, R/A, SMT type)

Used with: 2001TF-PT (female terminal)

Part Number Information:



Date	Version	EC No.	Description	DRWN	CH'K	APPR	General Tolerance	Zeakka Electronics				Document No.:	ZK- 2001W	
							.X ±0.3	APPR	CH'K	DRWN	Date	Dimensions	Scale	Version
							.XX ±0.2	Kai Lee	Cris Wang	Jun Wei	2020.8.8	mm	1:1	A
							.XXX ±0.1							

Specifications:

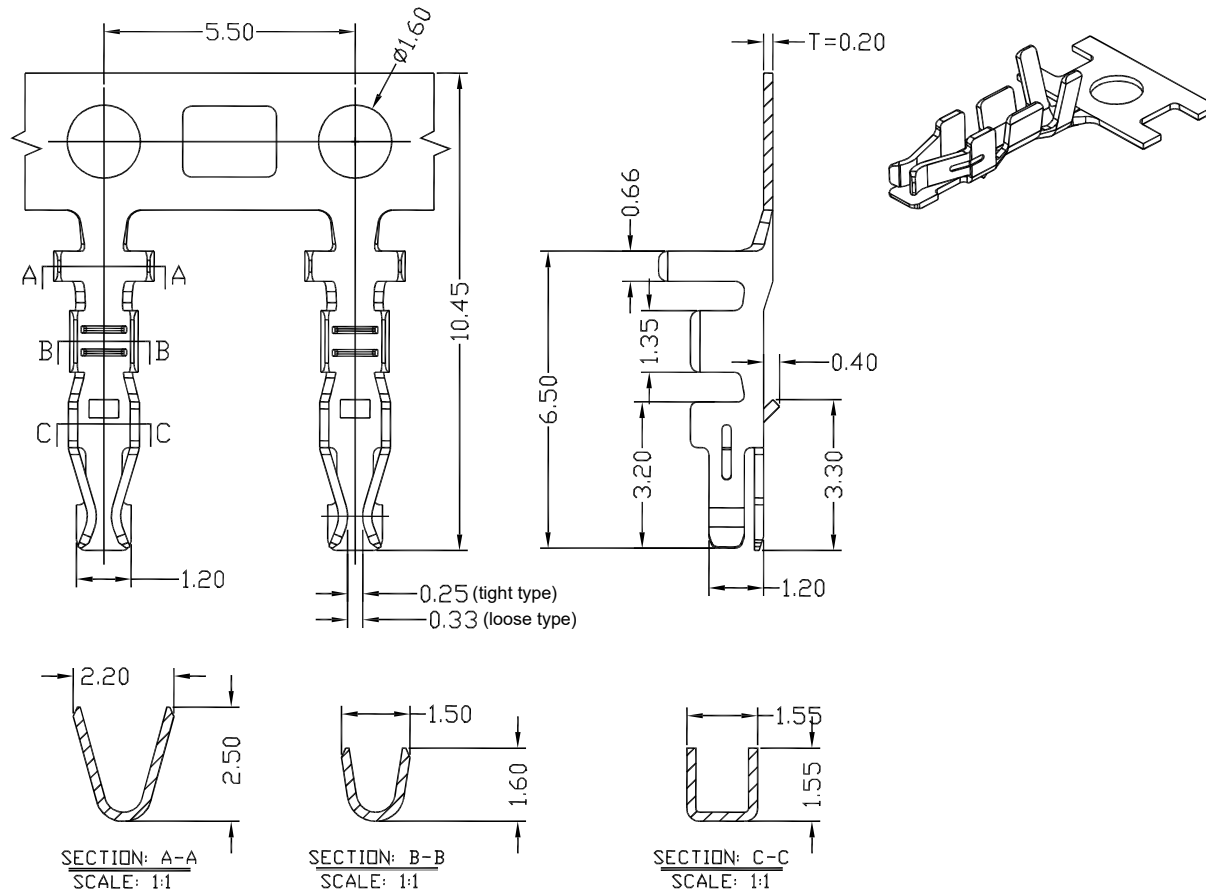
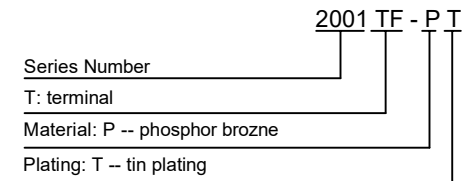
Current Rating: 3.0A AC/DC
 Voltage rating: 250V AC/DC
 Temperature range: -40°C to +105°C
 Contact resistance: 20mΩ max.
 Insulation resistance: 1000MΩ min.
 Withstand voltage: 800V AC/minute
 Applicable wire: AWG28 - AWG22
 Insulation OD: max 1.55mm
 Package: 10000pcs / reel

Material:

Phosphor bronze

Used with: 2001W (female housing)

Part Number Information:



							General Tolerance	Zeakka Electronics				Document No.: ZK-2001TF						
							.X ±0.3					Title: TERMINAL, FEMALE, CRIMP TYPE, PHOSPHOR BRONZE, TIN, REEL						
							.XX ±0.2					APPR	CH'K	DRWN	Date	Dimensions	Scale	Version
							.XXX ±0.1					Kai Lee	Cris Wang	Jun Wei	2020.8.8	mm	1:1	A
Date	Version	EC No.	Description	DRWN	CH'K	APPR	THIRD ANGLE PROJECTION											