

Circuits	Dimensions (mm)		
	A	B	C
2	2.50	5.50	11.50
3	5.00	8.00	14.00
4	7.50	10.50	16.50
5	10.00	13.00	19.00
6	12.50	15.50	21.50
7	15.00	18.00	24.00
8	17.50	20.50	26.50
9	20.00	23.00	29.00
10	22.50	25.50	31.50
11	25.00	28.00	34.00
12	27.50	30.50	36.50

**Specifications:**

Current Rating: 3.0A AC/DC  
Voltage rating: 250V AC/DC  
Temperature range: -25°C to +85°C  
Contact resistance: 10mΩ max.  
Insulation resistance: 500MΩ min.  
Withstand voltage: 1500V AC/minute

**Material:**

Housing: nylon 66, UL94V-0, black/white

**Mates with:** 2505WM (wire connector, male)

**Used with:** 2505TF-PT (female terminal)

**Part Number Information:**

2505 WF - XX 00 XX

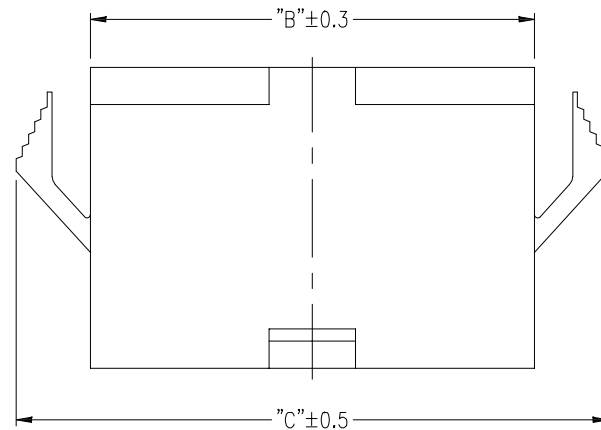
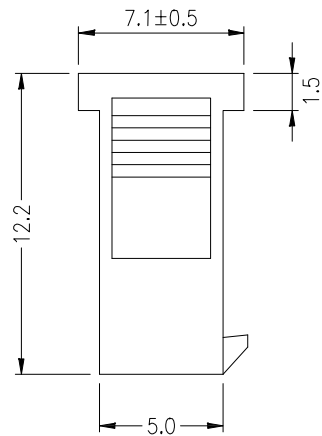
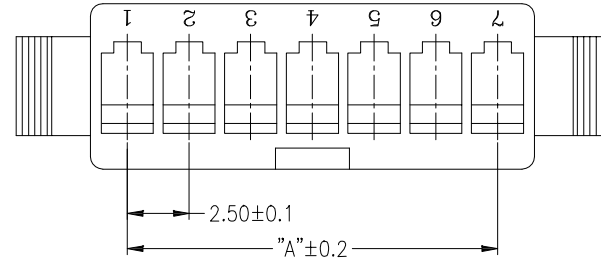
Series Number

WF: wire connector, female

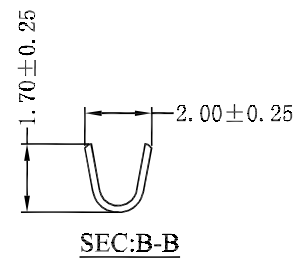
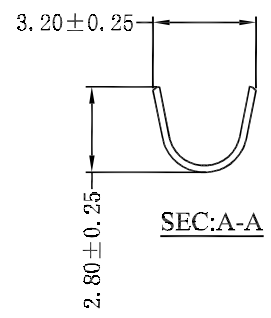
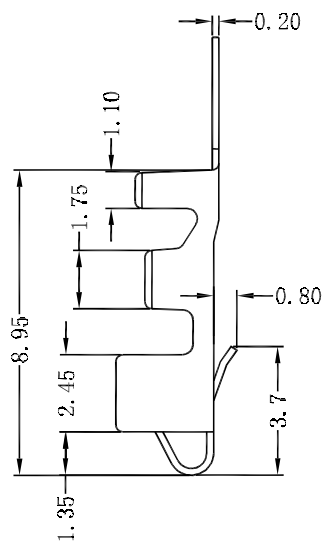
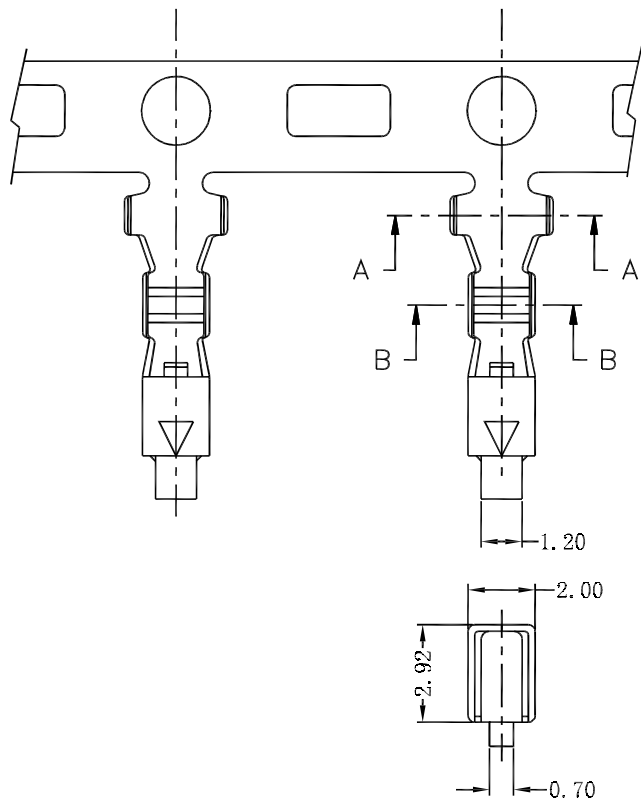
No. of circuits, 02 to 12

Material: 00-- nylon 66, UL94V-0

Color: BK -- black, WH -- white



							General Tolerance	Zeakka Electronics				Document No.: ZK-2505WF		
							.X ±0.3					Title: HOUSING, FEMALE, CRIMP TYPE, SINGLE ROW, 2.5MM PITCH		
							.XX ±0.2	APPR	CH'K	DRWN	Date	Dimensions	Scale	Version
Date	Version	EC No.	Description	DRWN	CH'K	APPR	.XXX ±0.1	Kai Lee	Cris Wang	Jun Wei	2020.8.8	mm	1:1	A
							THIRD ANGLE PROJECTION							



**Specifications:**

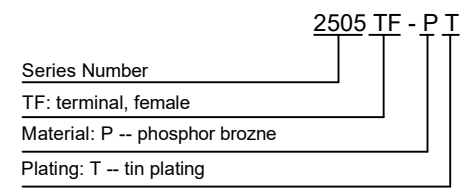
Current Rating: 3.0A AC/DC  
 Voltage rating: 250V AC/DC  
 Temperature range: -25°C to +85°C  
 Contact resistance: 20mΩ max.  
 Insulation resistance: 500MΩ min.  
 Withstand voltage: 1500V AC/minute  
 Applicable wire: AWG28 - AWG22  
 Insulation OD: max 1.80mm

**Material:**

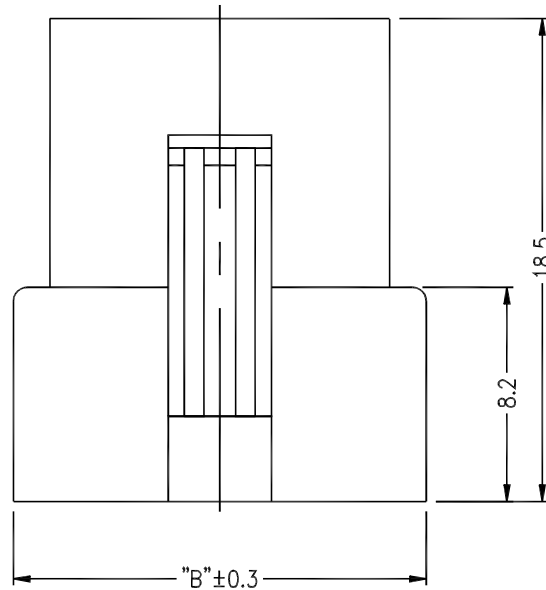
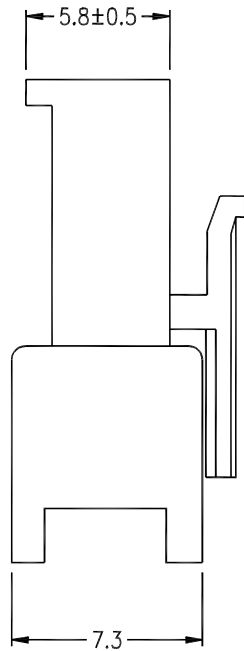
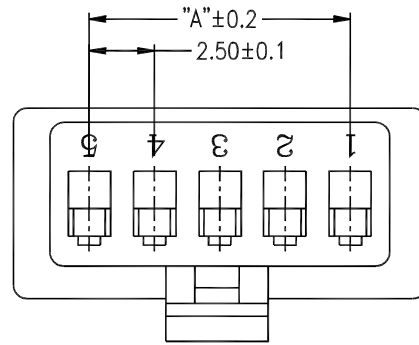
Phosphor bronze

**Used with:** 2505WF (wire connector, female)

**Part Number Information:**



							General Tolerance	<b>Zeakka Electronics</b>				Document No.: ZK-2505TF						
							.X ±0.3					Title: TERMINAL, FEMALE, CRIMP TYPE, PHOSPHOR BRONZE, TIN, REEL						
							.XX ±0.2					APPR	CH'K	DRWN	Date	Dimensions	Scale	Version
							.XXX ±0.1					Kai Lee	Cris Wang	Jun Wei	2020.8.8	mm	1:1	A
Date	Version	EC No.	Description	DRWN	CH'K	APPR	THIRD ANGLE PROJECTION											



**Specifications:**

Current Rating: 3.0A AC/DC  
 Voltage rating: 250V AC/DC  
 Temperature range: -25°C to +85°C  
 Contact resistance: 10mΩ max.  
 Insulation resistance: 500MΩ min.  
 Withstand voltage: 1500V AC/minute

Circuits	Dimensions (mm)	
	A	B
2	2.50	8.00
3	5.00	10.50
4	7.50	13.00
5	10.00	15.50
6	12.50	18.00
7	15.00	20.50
8	17.50	23.00
9	20.00	25.50
10	22.50	28.00
11	25.00	30.50
12	27.50	33.00

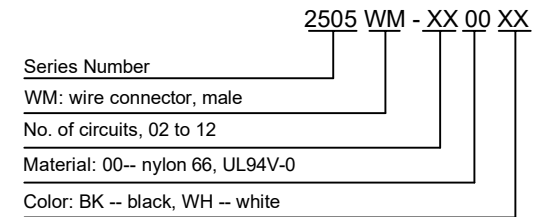
**Material:**

Housing: nylon 66, UL94V-0, black/white

**Mates with:** 2505WF (wire connector, female)

**Used with:** 2505TM-PT (male terminal)

**Part Number Information:**



							General Tolerance	<b>Zeakka Electronics</b>				Document No.: ZK-2505WM		
							.X ±0.3					Title: HOUSING, MALE, CRIMP TYPE, SINGLE ROW, 2.5MM PITCH		
							.XX ±0.2	APPR	CH'K	DRWN	Date	Dimensions	Scale	Version
Date	Version	EC No.	Description	DRWN	CH'K	APPR	.XXX ±0.1	Kai Lee	Cris Wang	Jun Wei	2020.8.8	mm	1:1	A
							THIRD ANGLE PROJECTION							

**Specifications:**

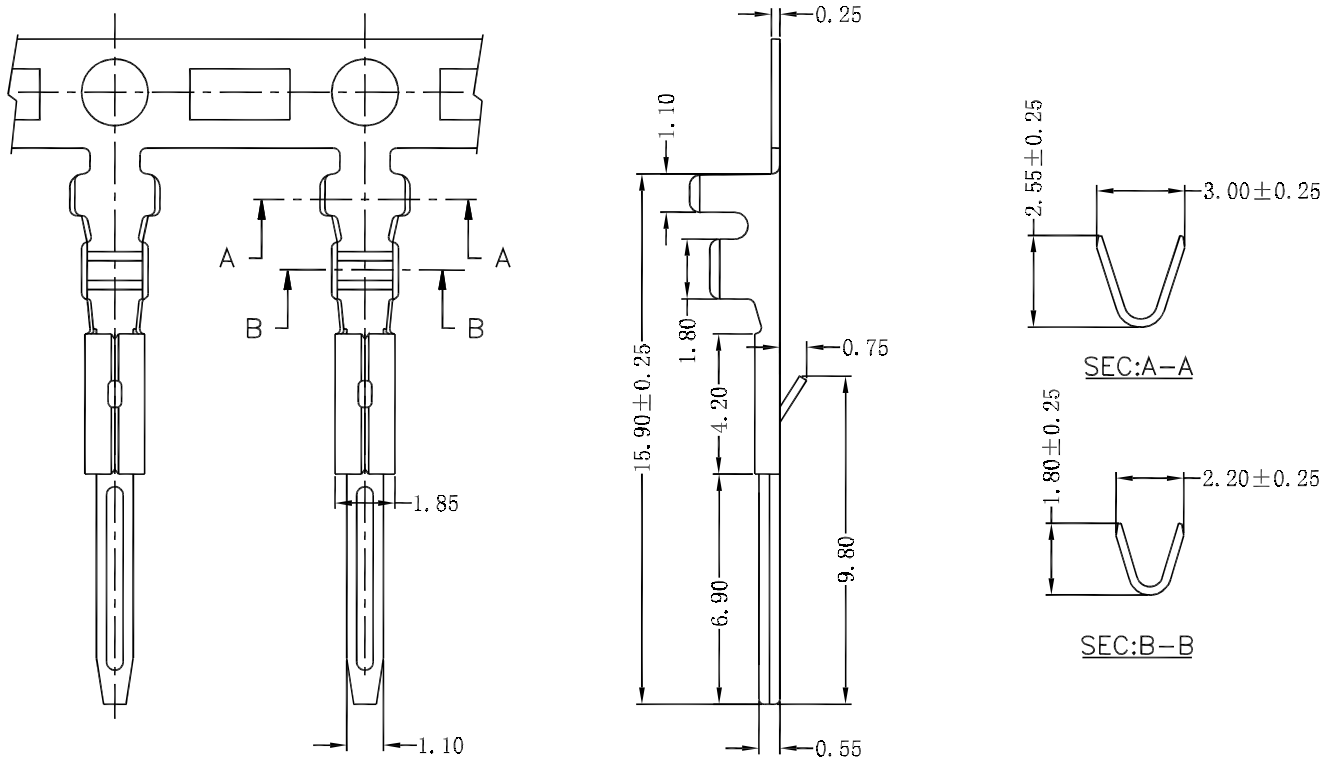
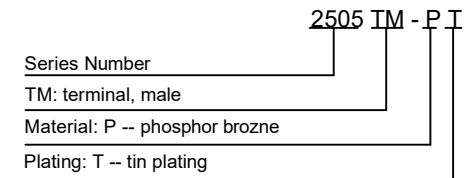
Current Rating: 3.0A AC/DC  
 Voltage rating: 250V AC/DC  
 Temperature range: -25°C to +85°C  
 Contact resistance: 20mΩ max.  
 Insulation resistance: 500MΩ min.  
 Withstand voltage: 1500V AC/minute  
 Applicable wire: AWG28 - AWG22  
 Insulation OD: max 1.80mm

**Material:**

Phosphor bronze

**Used with:** 2505WM (wire connector, male)

**Part Number Information:**



							General Tolerance	<b>Zeakka Electronics</b>				Document No.: ZK-2505TM						
							.X ±0.3					Title: TERMINAL, MALE, CRIMP TYPE, PHOSPHOR BRONZE, TIN, REEL						
							.XX ±0.2					APPR	CH'K	DRWN	Date	Dimensions	Scale	Version
							.XXX ±0.1					Kai Lee	Cris Wang	Jun Wei	2020.8.8	mm	1:1	A
Date	Version	EC No.	Description	DRWN	CH'K	APPR	THIRD ANGLE PROJECTION											