

Recommand PCB Layout

D
2.50mm
2.90mm

Specifications:

- Current Rating: 3.0A AC/DC
- Voltage rating: 250V AC/DC
- Temperature range: -25°C to +85°C
- Contact resistance: 20mΩ max.
- Insulation resistance: 1000MΩ min.
- Withstand voltage: 1500V AC/minute

Material:

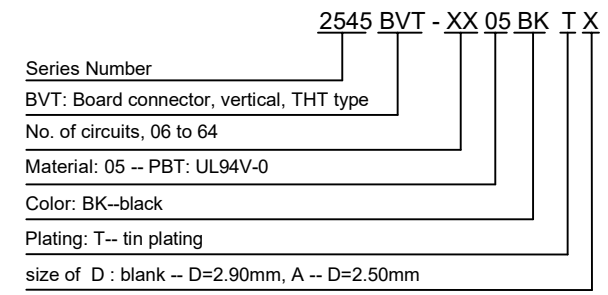
- Housing: PBT, UL94V-0, black
- PIN: brass

Mates with:

- 2545W (wire connector)
- 2545WB (wire connector, B type -- without lock)

Circuits	Dimensions (mm)		
	A	B	C
6	5.08	10.12	8.02
8	7.62	12.66	10.56
10	10.16	15.20	13.10
12	12.70	17.74	15.64
14	15.24	20.28	18.18
16	17.78	22.82	20.72
18	20.32	25.36	23.26
20	22.86	27.90	25.80
22	25.40	30.44	28.34
24	27.94	32.98	30.88
26	30.48	35.52	33.42
28	33.02	38.06	35.96
30	35.56	40.60	38.50
32	38.10	43.14	41.04
34	40.64	45.68	43.58
36	43.18	48.22	46.12
38	45.72	50.76	48.66
40	48.26	53.30	51.20
42	50.80	55.84	53.74
44	53.34	58.38	56.28
46	55.88	60.92	58.82
48	58.42	63.46	61.36
50	60.96	66.00	63.90
52	63.50	68.54	66.44
54	66.04	71.08	68.98
56	68.58	73.62	71.52
58	71.12	76.16	74.06
60	73.66	78.70	76.60
62	76.20	81.24	79.14
64	78.74	83.78	81.68

Part Number Information:



Date	Version	EC No.	Description	DRWN	CH'K	APPR	General Tolerance	Zeakka Electronics				Document No.:	ZK-2545BVT	
							.X ±0.3	APPR	CH'K	DRWN	Date	Title:	HEADER, VERTICAL, THT TYPE, DUAL ROW, 2.54MM PITCH, TIN	
							.XX ±0.2					Dimensions	Scale	Version
							.XXX ±0.1	Kai Lee	Cris Wang	Jun Wei	2020.8.8	mm	1:1	A
							THIRD ANGLE PROJECTION							

Circuits	Dimensions (mm)		
	A	B	C
6	5.08	10.12	8.02
8	7.62	12.66	10.56
10	10.16	15.20	13.10
12	12.70	17.74	15.64
14	15.24	20.28	18.18
16	17.78	22.82	20.72
18	20.32	25.36	23.26
20	22.86	27.90	25.80
22	25.40	30.44	28.34
24	27.94	32.98	30.88
26	30.48	35.52	33.42
28	33.02	38.06	35.96
30	35.56	40.60	38.50
32	38.10	43.14	41.04
34	40.64	45.68	43.58
36	43.18	48.22	46.12
38	45.72	50.76	48.66
40	48.26	53.30	51.20
42	50.80	55.84	53.74
44	53.34	58.38	56.28
46	55.88	60.92	58.82
48	58.42	63.46	61.36
50	60.96	66.00	63.90
52	63.50	68.54	66.44
54	66.04	71.08	68.98
56	68.58	73.62	71.52
58	71.12	76.16	74.06
60	73.66	78.70	76.60
62	76.20	81.24	79.14
64	78.74	83.78	81.68

Specifications:

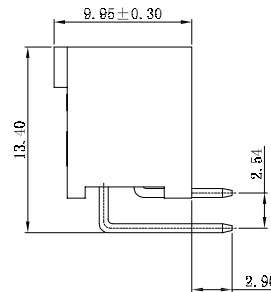
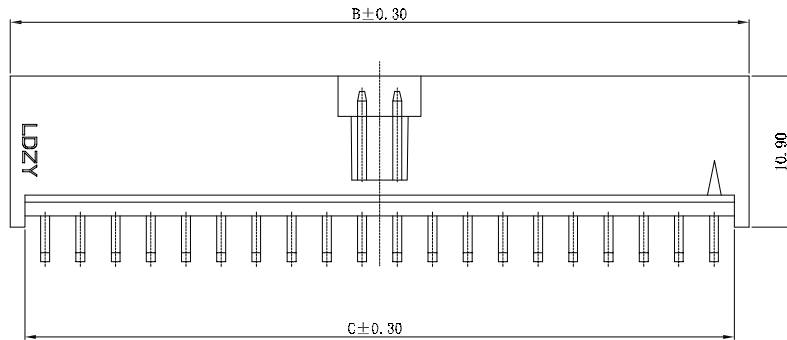
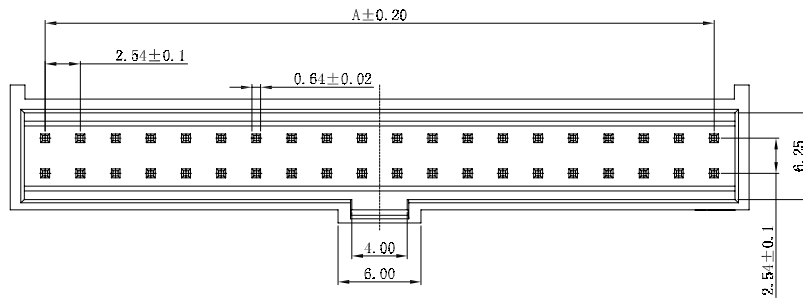
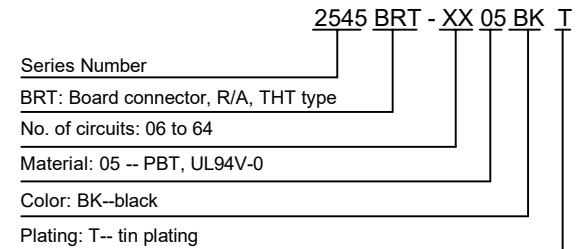
- Current Rating: 3.0A AC/DC
- Voltage rating: 250V AC/DC
- Temperature range: -25°C to +85°C
- Contact resistance: 20mΩ max.
- Insulation resistance: 1000MΩ min.
- Withstand voltage: 1500V AC/minute

Material:

- Housing: PBT, UL94V-0, black
- PIN: brass

- Mates with:** 2545W (wire connector)
2545WB (wire connector, B type -- without lock)

Part Number Information:



							General Tolerance	Zeakka Electronics				Document No.: ZK-2545BRT		
							.X ± 0.3					Title: HEADER, R/A, THT TYPE, DUAL ROW, 2.54MM PITCH, TIN		
							.XX ± 0.2	APPR	CH'K	DRWN	Date	Dimensions	Scale	Version
Date	Version	EC No.	Description	DRWN	CH'K	APPR	.XXX ± 0.1	Kai Lee	Cris Wang	Jun Wei	2020.8.8	mm	1:1	A
							THIRD ANGLE PROJECTION							

Circuits	Dimensions (mm)		
	A	B	C
6	5.08	10.12	8.02
8	7.62	12.66	10.56
10	10.16	15.20	13.10
12	12.70	17.74	15.64
14	15.24	20.28	18.18
16	17.78	22.82	20.72
18	20.32	25.36	23.26
20	22.86	27.90	25.80
22	25.40	30.44	28.34
24	27.94	32.98	30.88
26	30.48	35.52	33.42
28	33.02	38.06	35.96
30	35.56	40.60	38.50
32	38.10	43.14	41.04
34	40.64	45.68	43.58
36	43.18	48.22	46.12
38	45.72	50.76	48.66
40	48.26	53.30	51.20
42	50.80	55.84	53.74
44	53.34	58.38	56.28
46	55.88	60.92	58.82
48	58.42	63.46	61.36
50	60.96	66.00	63.90
52	63.50	68.54	66.44
54	66.04	71.08	68.98
56	68.58	73.62	71.52
58	71.12	76.16	74.06
60	73.66	78.70	76.60
62	76.20	81.24	79.14
64	78.74	83.78	81.68

Specifications:

Current Rating: 3.0A AC/DC
Voltage rating: 250V AC/DC
Temperature range: -25°C to +85°C
Contact resistance: 20mΩ max.
Insulation resistance: 1000MΩ min.
Withstand voltage: 1500V AC/minute

Material:

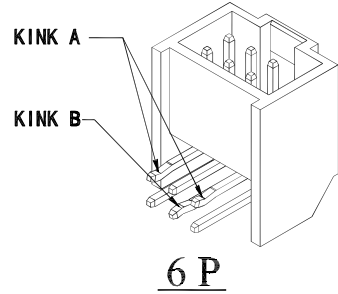
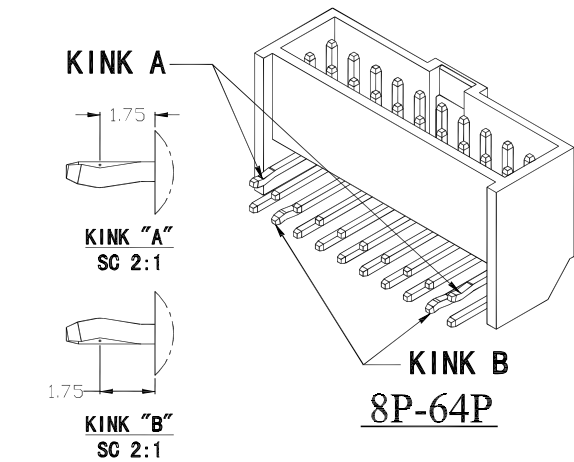
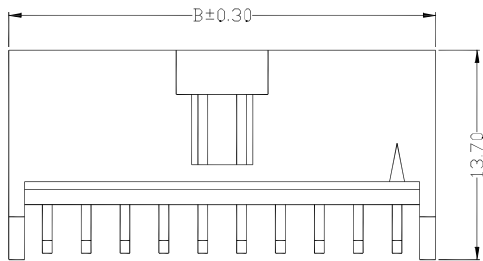
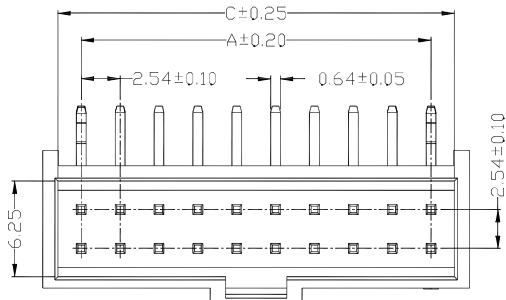
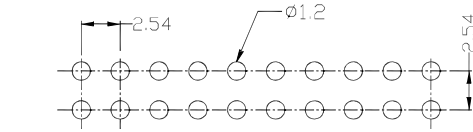
Housing: PBT, UL94V-0, black
PIN: brass

Mates with: 2545W (wire connector)
2545WB (wire connector, B type -- without lock)

Part Number Information:

2545 BRTB - XX 05 BK T X

Series Number
BRTB: Board conn, R/A, THT, extended wall
No. of circuits: 06 to 64
Material: 05 -- PBT, UL94V-0
Color: BK--black
Plating: T-- tin plating
size of D : blank ~ D=2.90mm, A ~ D=2.50mm



D
2.50mm
2.90mm

							General Tolerance	Zeakka Electronics				Document No.: ZK-2545BRTB		
							.X ±0.3					Title: HEADER, R/A, THT TYPE, DUAL ROW, 2.54MM PITCH, TIN		
							.XX ±0.2	APPR	CH'K	DRWN	Date	Dimensions	Scale	Version
Date	Version	EC No.	Description	DRWN	CH'K	APPR	.XXX ±0.1	Kai Lee	Cris Wang	Jun Wei	2020.8.8	mm	1:1	A
							THIRD ANGLE PROJECTION							

Circuits	Dimensions (mm)	
	A	B
6	5.08	7.82
8	7.62	10.36
10	10.16	12.90
12	12.70	15.44
14	15.24	17.98
16	17.78	20.52
18	20.32	23.06
20	22.86	25.60
22	25.40	28.14
24	27.94	30.68
26	30.48	33.22
28	33.02	35.76
30	35.56	38.30
32	38.10	40.84
34	40.64	43.38
36	43.18	45.92
38	45.72	48.46
40	48.26	51.00
42	50.80	53.54
44	53.34	56.08
46	55.88	58.62
48	58.42	61.16
50	60.96	63.70
52	63.50	66.24
54	66.04	68.78
56	68.58	71.32
58	71.12	73.86
60	73.66	76.40
62	76.20	78.94
64	78.74	81.48

Specifications:

Current Rating: 3.0A AC/DC
Voltage rating: 250V AC/DC
Temperature range: -25°C to +85°C
Contact resistance: 20mΩ max.
Insulation resistance: 1000MΩ min.
Withstand voltage: 1500V AC/minute

Material:

Housing: PBT, UL94V-0, black

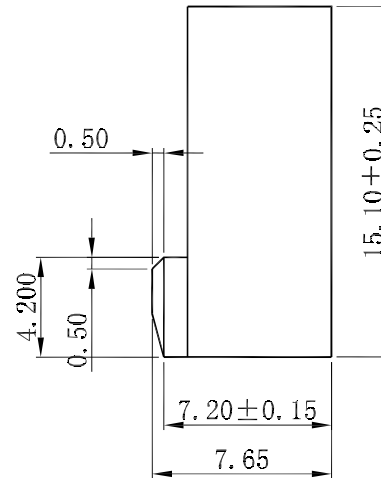
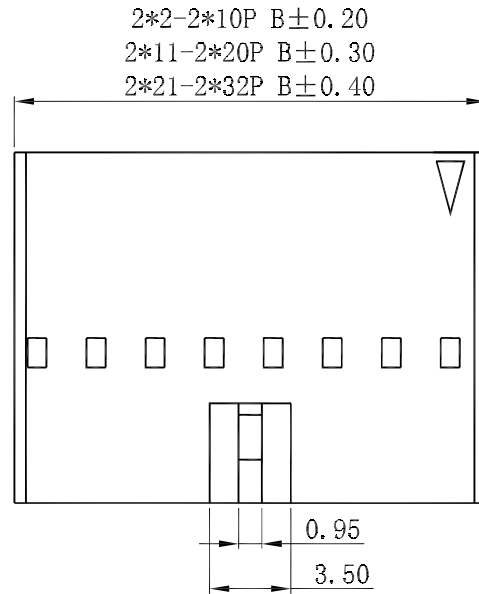
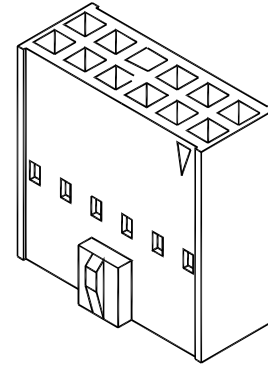
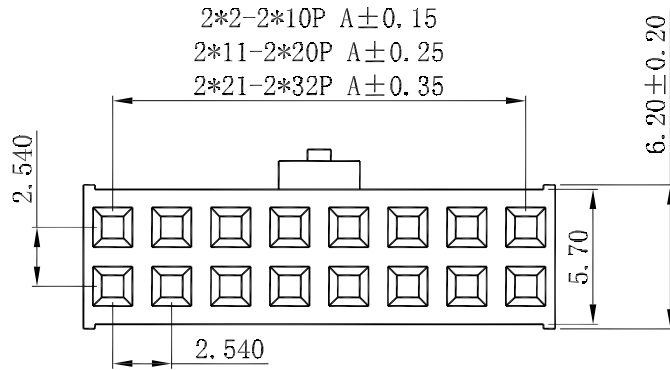
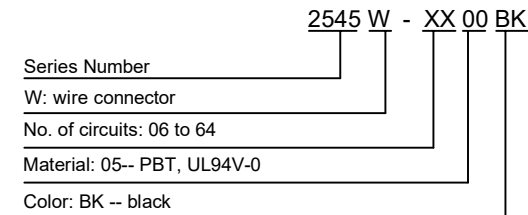
Mates with:

2545BVT (board connector, vertical, THT type)
2545BRT (board connector, R/A, THT type)
2545BRTB (board connector, R/A, THT type, extended wall)

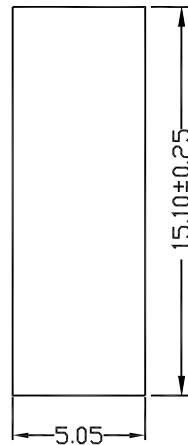
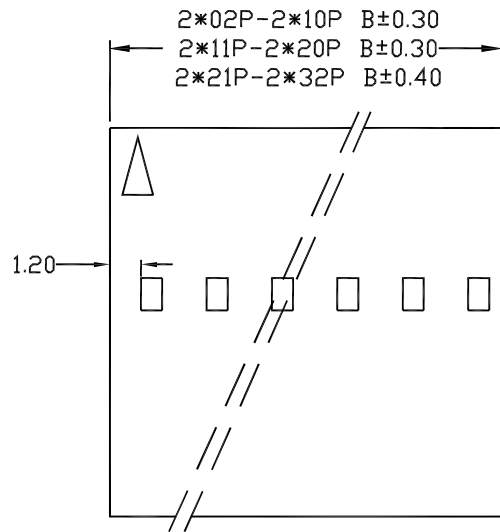
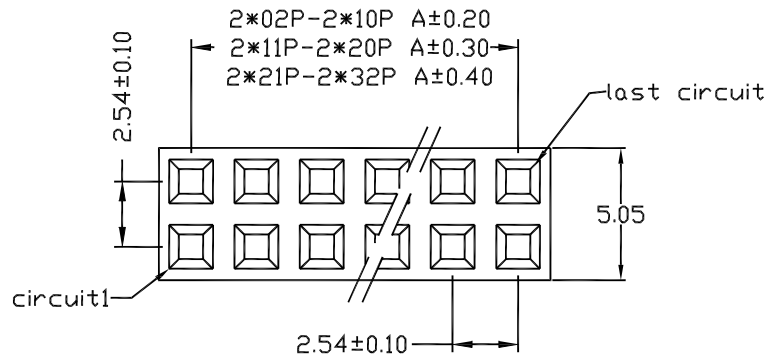
Used with:

2545TF-PX (terminal)

Part Number Information:



						General Tolerance		Zeakka Electronics				Document No.: ZK-2545W		
						.X ±0.3						Title: HOUSING, FEMALE, CRIMP TYPE, DUAL ROW, 2.54MM PITCH		
						.XX ±0.2		APPR	CH'K	DRWN	Date	Dimensions	Scale	Version
						.XXX ±0.1		Kai Lee	Cris Wang	Jun Wei	2020.8.8	mm	1:1	A
Date	Version	EC No.	Description	DRWN	CH'K	APPR	THIRD ANGLE PROJECTION							



Circuits	Dimensions (mm)	
	A	B
4	2.54	5.08
6	5.08	7.62
8	7.62	10.16
10	10.16	12.70
12	12.70	15.24
14	15.24	17.78
16	17.78	20.32
18	20.32	22.86
20	22.86	25.40
22	25.40	27.94
24	27.94	30.48
26	30.48	33.02
28	33.02	35.56
30	35.56	38.10
32	38.10	40.64
34	40.64	43.18
36	43.18	45.72
38	45.72	48.26
40	48.26	50.80
42	50.80	53.34
44	53.34	55.88
46	55.88	58.42
48	58.42	60.96
50	60.96	63.50
52	63.50	66.04
54	66.04	68.58
56	68.58	71.12
58	71.12	73.66
60	73.66	76.20
62	76.20	78.74
64	78.74	81.28

Specifications:

Current Rating: 3.0A AC/DC
 Voltage rating: 250V AC/DC
 Temperature range: -25°C to +85°C
 Contact resistance: 20mΩ max.
 Insulation resistance: 1000MΩ min.
 Withstand voltage: 1500V AC/minute

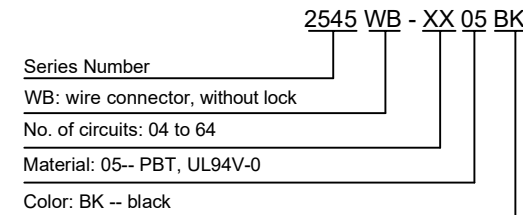
Material:

Housing: PBT, UL94V-0, black

Mates with: 2545BVT (board connector, vertical, THT type)
 2545BRT (board connector, R/A, THT type)
 2545BRTB (board connector, R/A, THT type, extended wall)

Used with: 2545TF-PX (terminal)

Part Number Information:



							General Tolerance	Zeakka Electronics				Document No.: ZK-2545WB		
							.X ±0.3					Title: HOUSING, MALE, CRIMP TYPE, DUAL ROW, 2.54MM PITCH		
							.XX ±0.2	APPR	CH'K	DRWN	Date	Dimensions	Scale	Version
Date	Version	EC No.	Description	DRWN	CH'K	APPR	.XXX ±0.1	Kai Lee	Cris Wang	Jun Wei	2020.8.8	mm	1:1	A
							THIRD ANGLE PROJECTION							

